

# C O M P A N Y P R O F I L E



## **Design Consortium International (Pvt) Ltd.**

---

**45** Chartered Architects, Consulting Engineers, Quantity Surveyors,  
Interior & Landscape Designers, Urban Designers & Town Planners  
Borella Cross Road, Off Ward Place, Colombo-08, Sri Lanka Tel: 0112 698088/9, Fax 0112 696922. E-mail: dcil@sltnet.lk



# Design Consortium International (Pvt) Ltd.

---

45

Chartered Architects, Consulting Engineers, Quantity Surveyors,  
Interior & Landscape Designers, Urban Designers & Town Planners  
Borella Cross Road, Off Ward Place, Colombo-08, Sri Lanka Tel: 0112 698088/9, Fax 0112 696922. E-mail: dcil@sltnet.lk

---

CHARTERED ARCHITECTS

---

CONSULTING ENGINEERS

---

QUANTITY SURVEYORS

---

INTERIOR DESIGNERS

---

LANDSCAPE DESIGNERS

---

URBAN DESIGNERS

---

TOWN PLANNERS

---



# Design Consortium International (Pvt) Ltd.

---

45

Chartered Architects, Consulting Engineers, Quantity Surveyors,  
Interior & Landscape Designers, Urban Designers & Town Planners  
Borella Cross Road, Off Ward Place, Colombo-08, Sri Lanka Tel: 0112 698088/9, Fax 0112 696922. E-mail: [dcil@sltnet.lk](mailto:dcil@sltnet.lk)

ADDRESS : NO. 11, BORELLA CROSS ROAD, COLOMBO 08.

TELEPHONE : 94-11-2698088 / 9

FAX : 94-11-2696922

E-MAIL ADDRESS : [dcil@sltnet.lk](mailto:dcil@sltnet.lk)

WEB SITE : [www.designconsortiumlimited.com](http://www.designconsortiumlimited.com)

REGISTRATION NO. : PV 16220 (NEW) / PVS 49274 (OLD)

DATE OF REGISTRATION : 02 OCTOBER 2005

PLACE OF REGISTRATION : COLOMBO

SLIA REGISTRATION NO. : PAB / R / LL / 011

THE FIRM



# Design Consortium International (Pvt) Ltd.

---

45

Chartered Architects, Consulting Engineers, Quantity Surveyors,  
Interior & Landscape Designers, Urban Designers & Town Planners  
Borella Cross Road, Off Ward Place, Colombo-08, Sri Lanka Tel: 0112 698088/9, Fax 0112 696922. E-mail: [dcil@sltnet.lk](mailto:dcil@sltnet.lk)

Founder

Prof. Lakshman Alwis

B.Arch.(Melb), ARAIA, RIBA, FIA(SL), D.Sc.

Mr. Nalin Wijeyekoon

B.Sc.Eng., M.Sc.C.Eng., C.Eng(UK), MIEE, M.I.Mech.E.MIE(SL)

Mr. Migara Alwis

B.Sc.(Hons) Architecture (UK), PG . Dip. Advanced  
Architecture (UK), FIA(SL) Chartered Architect, RIBA

Mr. P. Somaratne

B.Sc.Eng., MIE(SL), ASHRAE

Mr. Prinith Perera

B.Sc.(BE), M.Sc.(Arch), FIA(SL)

Mr. Nilan Herath

B.Sc.Hons (Civil Eng.), C.Eng., MIE(SL), P.G.Dip.(Project Mgt.)

Mr. J. E. Godakumbura

C.Eng.FIE (SL), M.Tech. (Const. Management.), PG Dip. In Statistics

DIRECTORS





# Design Consortium International (Pvt) Ltd.

---

**45** Chartered Architects, Consulting Engineers, Quantity Surveyors,  
Interior & Landscape Designers, Urban Designers & Town Planners  
Borella Cross Road, Off Ward Place, Colombo-08, Sri Lanka Tel: 0112 698088/9, Fax 0112 696922. E-mail: [dcil@sltnet.lk](mailto:dcil@sltnet.lk)

*Architects create space for living....*

*Architecture is a Functional Art and a Pleasurable Science;  
Its implementation requires a fine balance of Codes, Functions, Aesthetics,  
Innovation, Technology, Time and Cost. Good Architecture is a major  
component of the positive influence on the human environment....*

*Successful implementation requires the employment of abundant  
resources, dedication, interest and the inputs of a multi-disciplinary team.*



# Design Consortium International (Pvt) Ltd.

---

45

Chartered Architects, Consulting Engineers, Quantity Surveyors,  
Interior & Landscape Designers, Urban Designers & Town Planners  
Borella Cross Road, Off Ward Place, Colombo-08, Sri Lanka Tel: 0112 698088/9, Fax 0112 696922. E-mail: [dcil@sltnet.lk](mailto:dcil@sltnet.lk)

*In keeping with its declared philosophy, DCIL provides a multi-disciplinary building consultancy.*

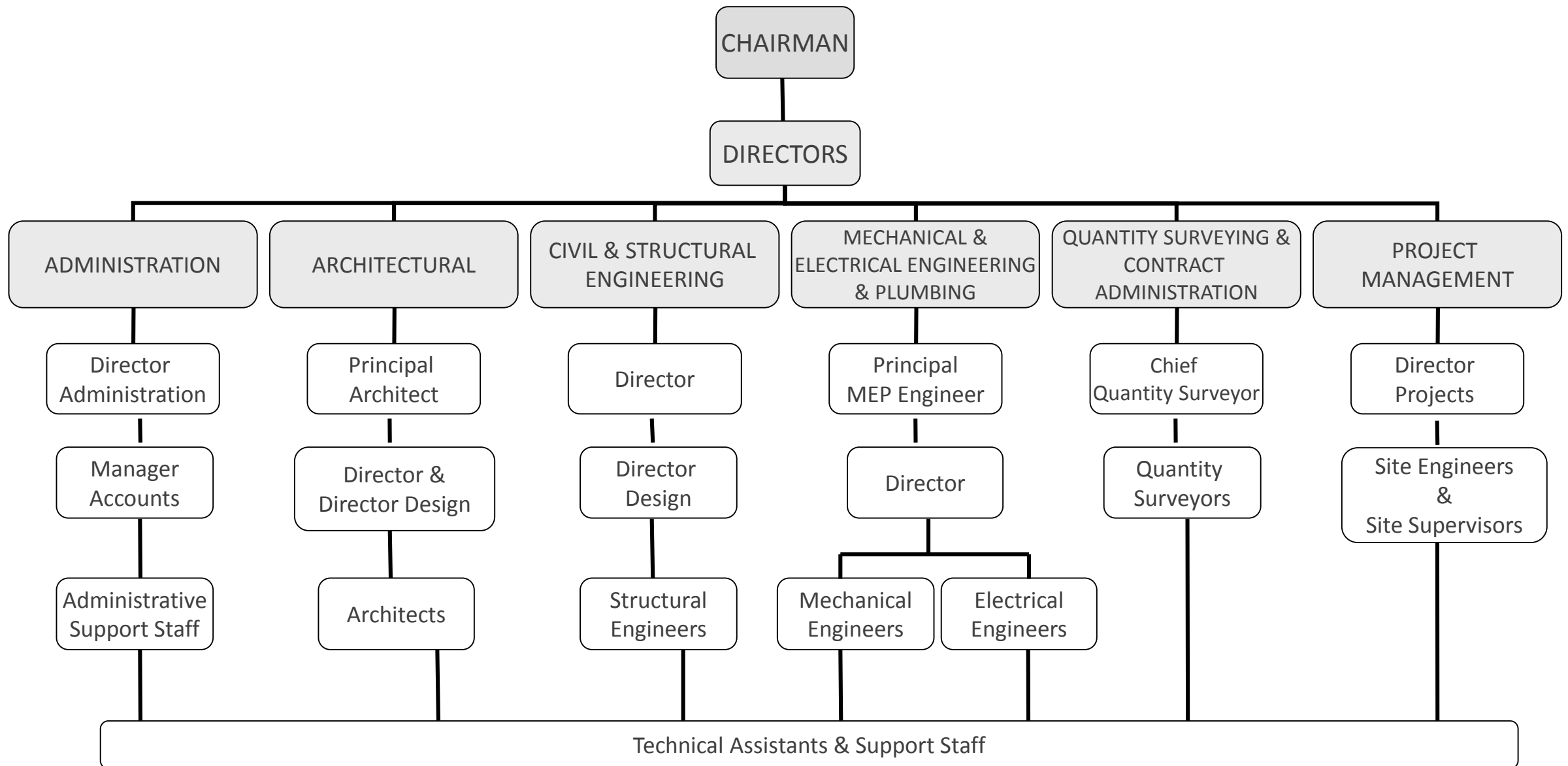
*It is geared to provide a comprehensive consultancy service in **Architecture, Structural & Civil, Mechanical & Electrical Engineering, Landscape, Interior & Urban Design, and Quantity Surveying.***

*Where necessary, DCIL makes use of well-established relationships with outside consultants.*



# Design Consortium International (Pvt) Ltd.

**45** Chartered Architects, Consulting Engineers, Quantity Surveyors,  
Interior & Landscape Designers, Urban Designers & Town Planners  
Borella Cross Road, Off Ward Place, Colombo-08, Sri Lanka Tel: 0112 698088/9, Fax 0112 696922. E-mail: [dcil@sltnet.lk](mailto:dcil@sltnet.lk)



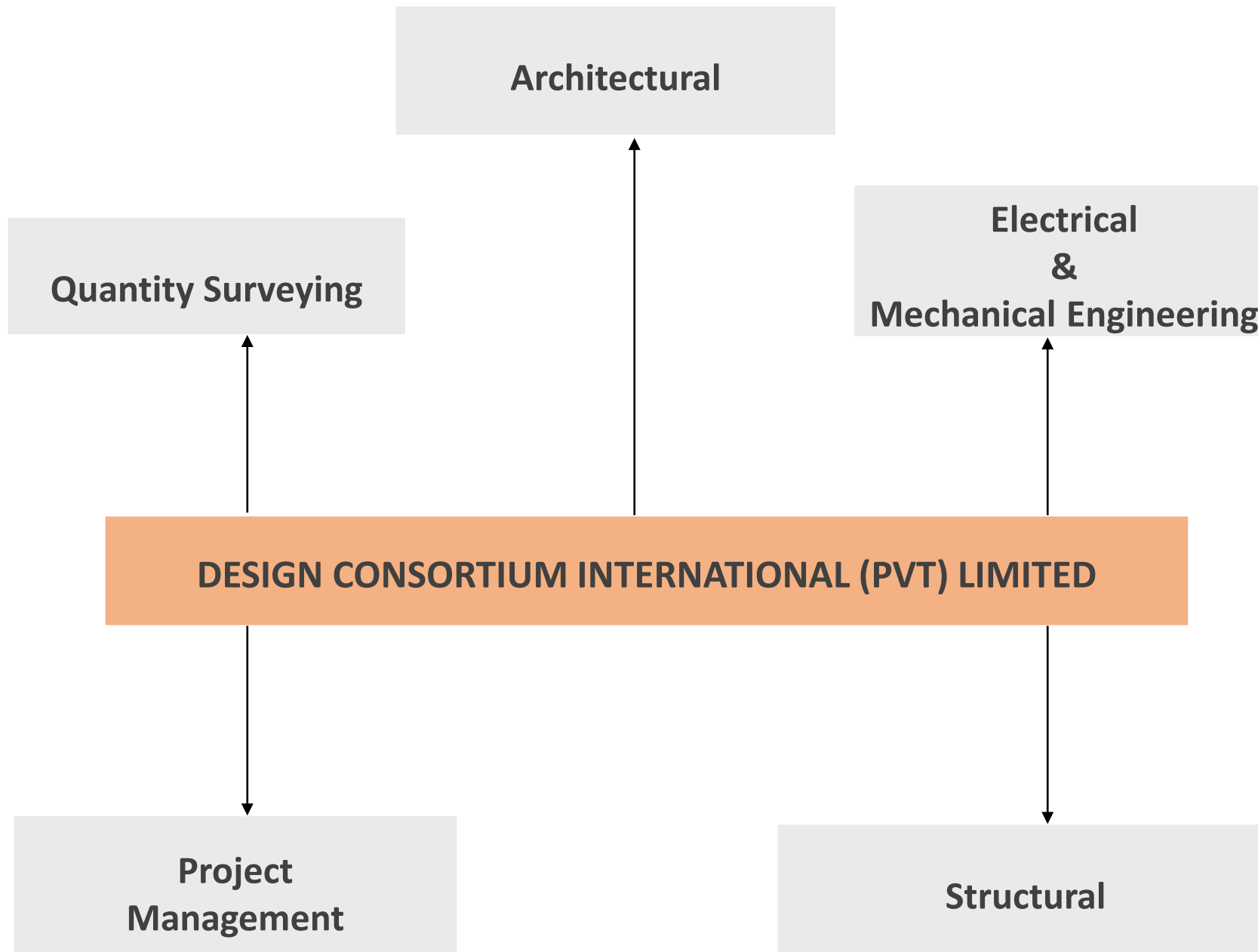
ORGANIZATIONAL CHART



# Design Consortium International (Pvt) Ltd.

45

Chartered Architects, Consulting Engineers, Quantity Surveyors,  
Interior & Landscape Designers, Urban Designers & Town Planners  
Borella Cross Road, Off Ward Place, Colombo-08, Sri Lanka Tel: 0112 698088/9, Fax 0112 696922. E-mail: dcil@sltnet.lk



# OUR CLIENTS





# OUR CLIENTS



# OUR CLIENTS



**PUBLIC ADMINISTRATION DIVISION**  
Ministry of Public Administration,  
Provincial Councils and Local Government



කමිකරු දෙපාර්තමේන්තුව  
தொழில் திணைக்களம்  
**Department of Labour**



විද්‍යා, තාක්ෂණ හා පර්යේෂණ  
අමාත්‍යාංශය  
**Ministry of  
Science, Technology & Research**



නාගරීය සංවර්ධන හා නිවාස අමාත්‍යාංශය - නිවාස හා ඉදිකිරීම් අංශය  
நகர அபிவிருத்தி மற்றும் வீடமைப்பு அமைச்சு - வீடமைப்பு மற்றும் நிர்மாணத்துறை பிரிவு  
**Ministry of Urban Development and Housing - Housing & Construction Division**



වරාය, නාවික හා ගුවන් සේවා අමාත්‍යාංශය  
**MINISTRY OF PORTS, SHIPPING AND AVIATION**  
துறைமுகங்கள், கப்பல்துறை மற்றும் விமான சேவைகள் அமைச்சு





# Design Consortium International (Pvt) Ltd.

---

**45** Chartered Architects, Consulting Engineers, Quantity Surveyors,  
Interior & Landscape Designers, Urban Designers & Town Planners  
Borella Cross Road, Off Ward Place, Colombo-08, Sri Lanka Tel: 0112 698088/9, Fax 0112 696922. E-mail: [dcil@sltnet.lk](mailto:dcil@sltnet.lk)

An efficient document control system is a must to deliver a good product. DCIL keeps a document control system in accordance with **ISO 9001:2015 Standards** ensuring that the all products and services are in line with international standards.

The documents used are basically categorized into two;

- Pre-Contract Documents
- Post-Contract Documents

Post-Contract Documents are;

- Tender Award Documents
- Construction Drawings

Pre-Contract Documents are;

- Client's Brief
- Preliminary Design and Estimate
- Preliminary Drawings
- Council Approval Drawings and Documents
- Design Calculations
- Design Calculation Verification Documents
- Tender Documents
- Tender Evaluation Reports, etc.

- Quality Assurance Check Lists;
- Request for Information
- Request for Clarifications
- Defects List
- Final Inspection Forms, etc.



# Design Consortium International (Pvt) Ltd.

---

**45** Chartered Architects, Consulting Engineers, Quantity Surveyors,  
Interior & Landscape Designers, Urban Designers & Town Planners  
Borella Cross Road, Off Ward Place, Colombo-08, Sri Lanka Tel: 0112 698088/9, Fax 0112 696922. E-mail: dcil@sltnet.lk

SLIA Design Award for Passikudah Tourist Development Area

---

*SLIA Competition 1st Prize 2009*

Development of No. 153, Elvitigala Mawatha, Colombo 8 for Ceylinco  
Condominiums Limited in 2003 (Trillium Residencies)

---

*SLIA Competition 1st Prize 2005*

Hatton National Bank Building for International Branch

---

*Competition amongst Architects 1st Prize 1995*

Hotel School & School of Tourism

---

*Competition amongst Architects 1st Prize 1995*



# Design Consortium International (Pvt) Ltd.

---

45

Chartered Architects, Consulting Engineers, Quantity Surveyors,  
Interior & Landscape Designers, Urban Designers & Town Planners  
Borella Cross Road, Off Ward Place, Colombo-08, Sri Lanka Tel: 0112 698088/9, Fax 0112 696922. E-mail: dcil@sltnet.lk

Sir John Kotalawela Defense Academy

---

*Design Award of the SLIA in 1993*

Library Building at Ragama for the North Colombo Medical College

---

*Inaugural Design Award of the SLIA in the category "Academic & Research" In 1987*

Teaching Hospital at Ragama for the North Colombo Medical College

---

*Inaugural Design Award of the SLIA in the category "Health and Medical Facilities" in 1987*

Sri Lanka Institute of Architects Headquarters Building

---

*Competition amongst architects – 1st Prize 1986*

DESIGN AWARDS





## GRAND HYATT, COLOMBO 03

The project consists of 02 Basement levels, an Entrance level & 47 Upper levels housing 458 units over a total floor area of 102,500 sqm.

GRAND | HYATT









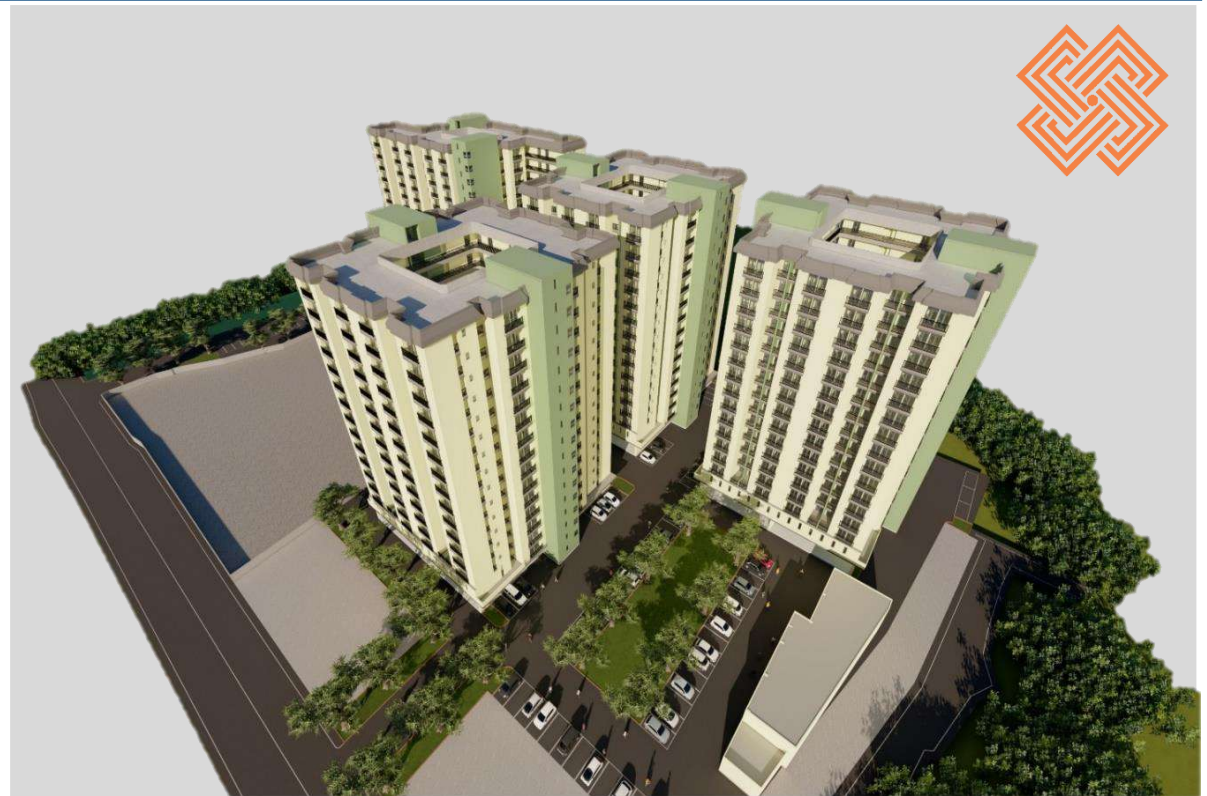
RESIDENTIAL APARTMENT FOR JAT HOLDINGS (PVT) LTD







PROPOSAL – HOUSING PROJECT FOR UDA, COL. 8

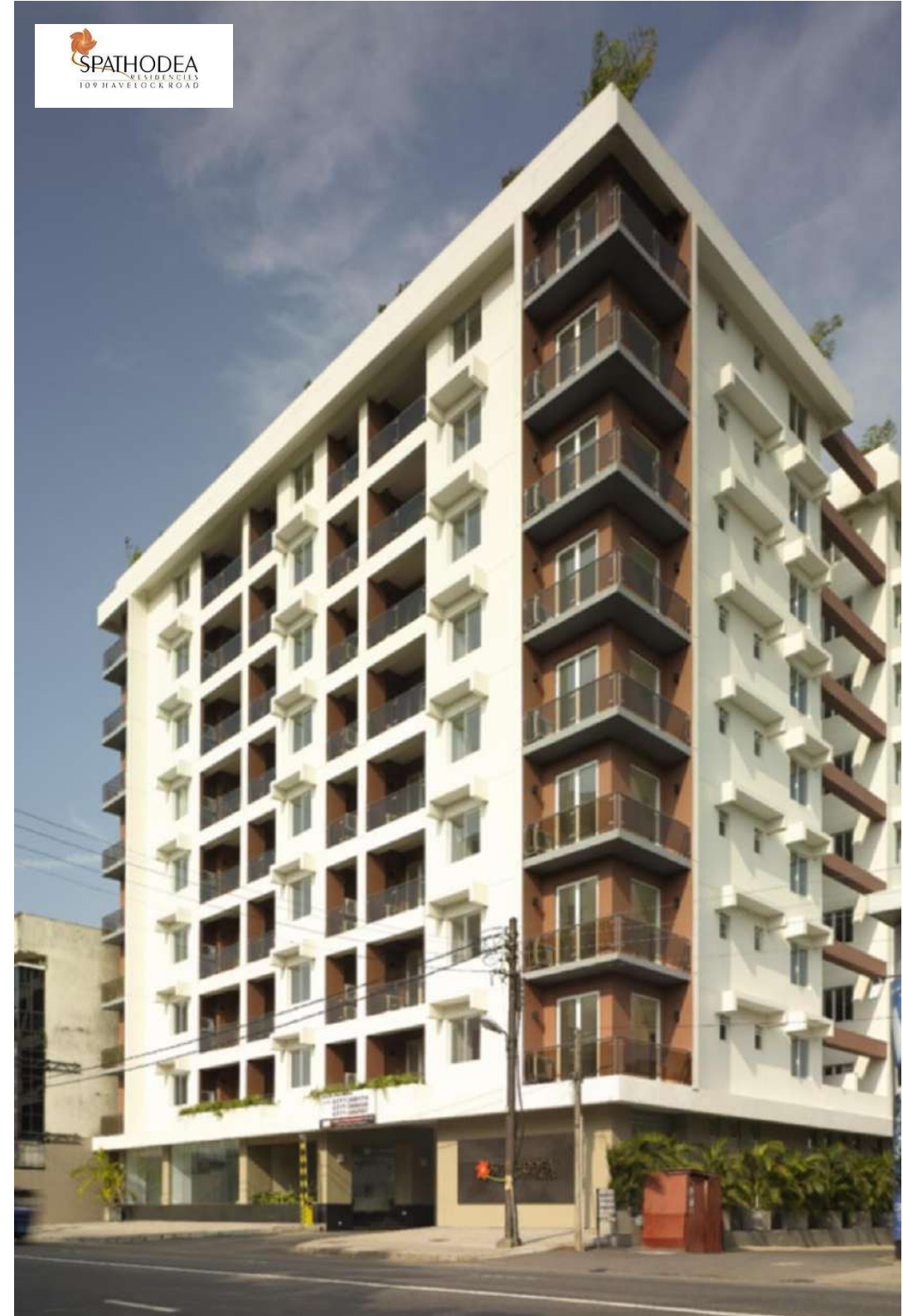


PROPOSAL – MIXED DEVELOPMENT FOR UDA AT THALAWATHUGODA



700 LOW INCOME HOUSING FOR UDA AT MADAMPITIYA





**BARNES PLACE RESIDENCIES AT COLOMBO 07**

**SPATHODEA RESIDENCIES FOR SITHMA DEV. (PVT) LTD  
AT HAVELOCK ROAD**





QUEENS COURT AT COLOMBO 03



CRESCAT APARTMENTS AT COLOMBO 03



CINNAMON GARDEN RESIDENCIES AT COLOMBO 07



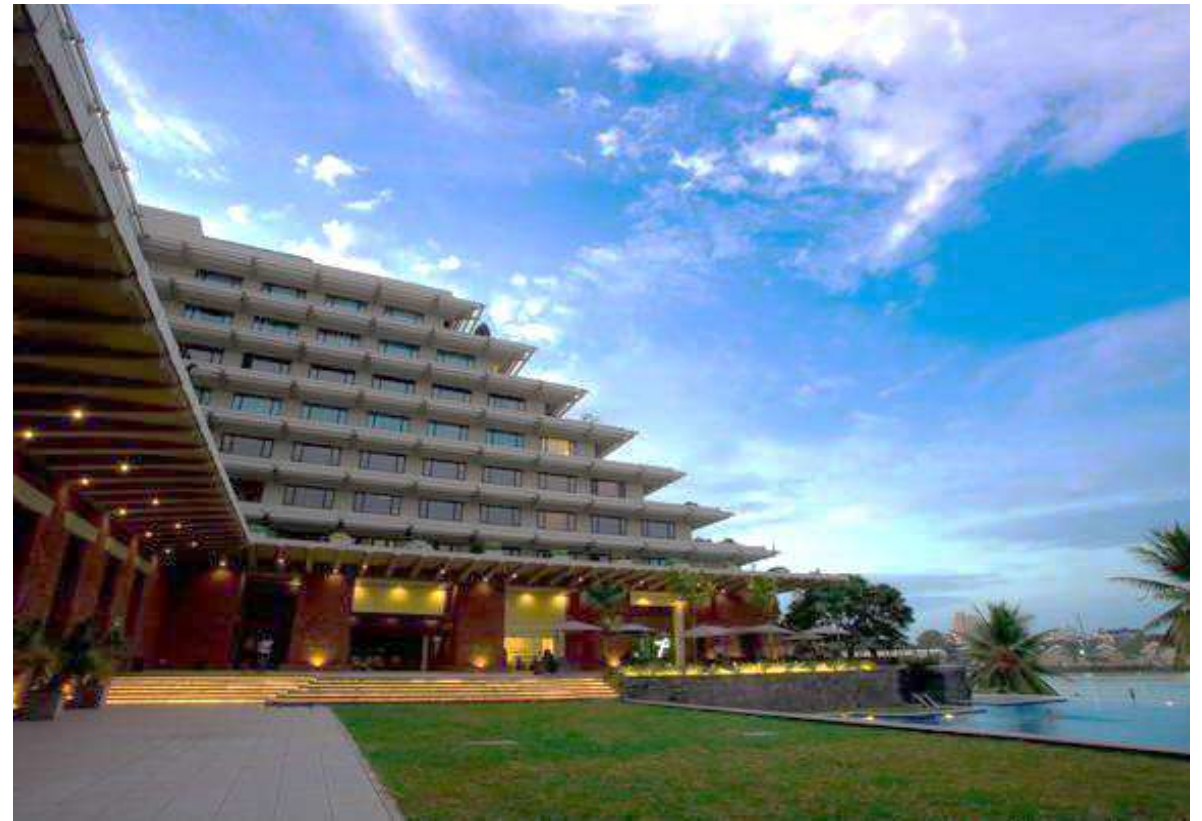


**PRINCE ALFRED  
TOWER  
COLOMBO 03**



**HYDE PARK RESIDENCIES AT COLOMBO 02**

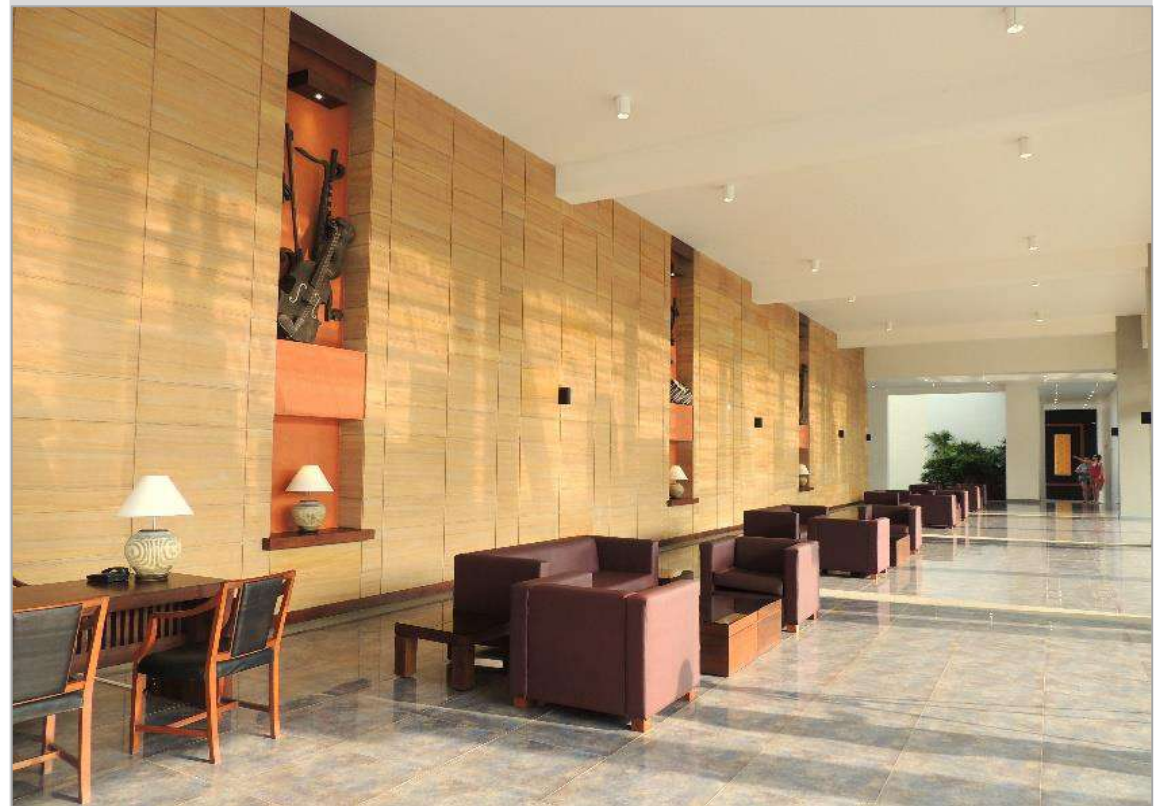




**TRANS ASIA HOTEL  
AT COLOMBO 02**

**(IN ASSOCIATION WITH  
FOREIGN CONSULTANTS)**





**REFURBISHMENT OF GOLDEN SUN RESORT (RAMADA)  
AT KALUTARA FOR AITKEN SPENCE HOTEL  
MANAGEMENTS (PVT) LTD – KNOWN AS THE ‘SANDS’**



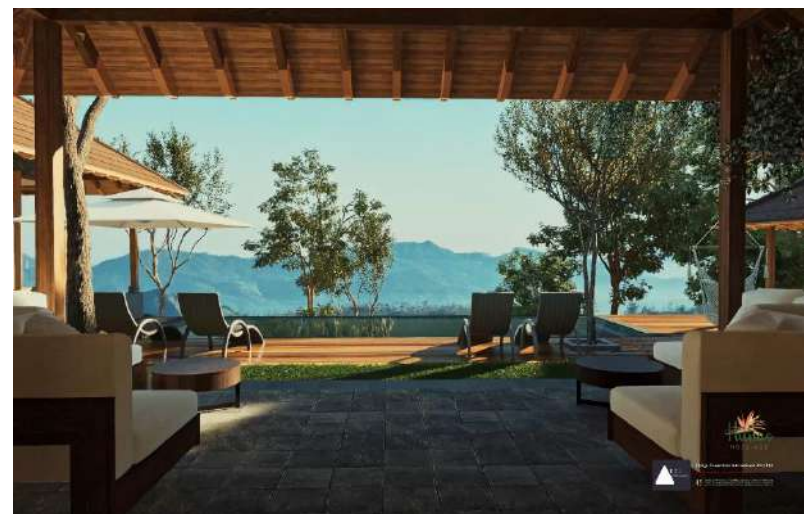
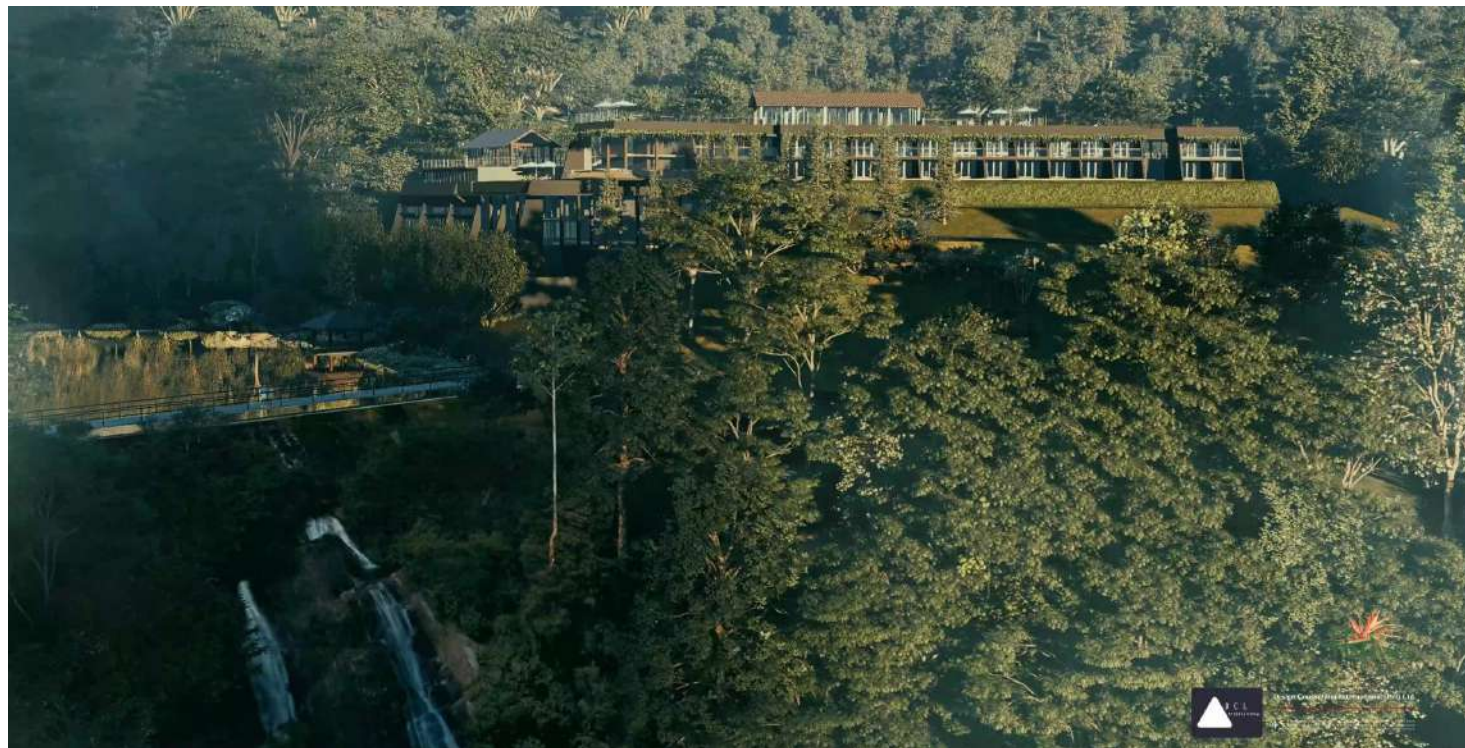


**HILTON DOUBLE TREE SEA FRONT HOTEL AT NEGOMBO**

The proposed 147 Room state-of –the art Hotel comprises of a semi-basement level, entrance level, mezzanine level & podium level together with 17 upper floor levels over a total floor area of approx.18,407 m<sup>2</sup> (198132 ft<sup>2</sup>).







PROPOSED REFURBISHMENT FOR HUNAS FALLS HOTEL, ELKADUWA, MATALE.





EXCLUSIVE RESTAURANT AT  
PATTIPOLO FOR  
MODERN DAIRY FARM OF  
UNITED DAIRIES LANKA (PVT) LTD







PROPOSED INTERIOR FOR PORT CITY COLOMBO





## MULTI-STOREY BUILDING FOR THE LABOUR SECRETARIAT @ NARAHPITA

The Office Building for the Labour Secretariat consists of 02 basement & 04 above ground car parking levels together with 24 Levels of Office area and an Auditorium over an area of approx 57,971 sq.m.

Project Value :Rs. 7.8 Billion  
Year of Completion : 2019







## WESTERN PROVINCIAL OFFICE COMPLEX @ BATTARAMULLA

The 14 storeyed office complex of total floor area of approx. 38,500 sq.m. consists of a Basement, Ground floor & 13 Upper floors.

Project Value :Rs. 3.9 Billion  
Year of Completion : 2018



## WESTERN PROVINCIAL COUNCIL AT BATTARAMULLA







ORION CITY PHASE 1

**ORION TOWERS FOR ORION DEVELOPMENT (PVT) LTD IN ASSOCIATION WITH DPA ARCHITECTS @ COLOMBO 09**

The 20 storeyed office complex consists of a Basement, Ground level & 19 office levels.

Project Value :Rs. 2.4 Billion  
Year of Completion : 2019







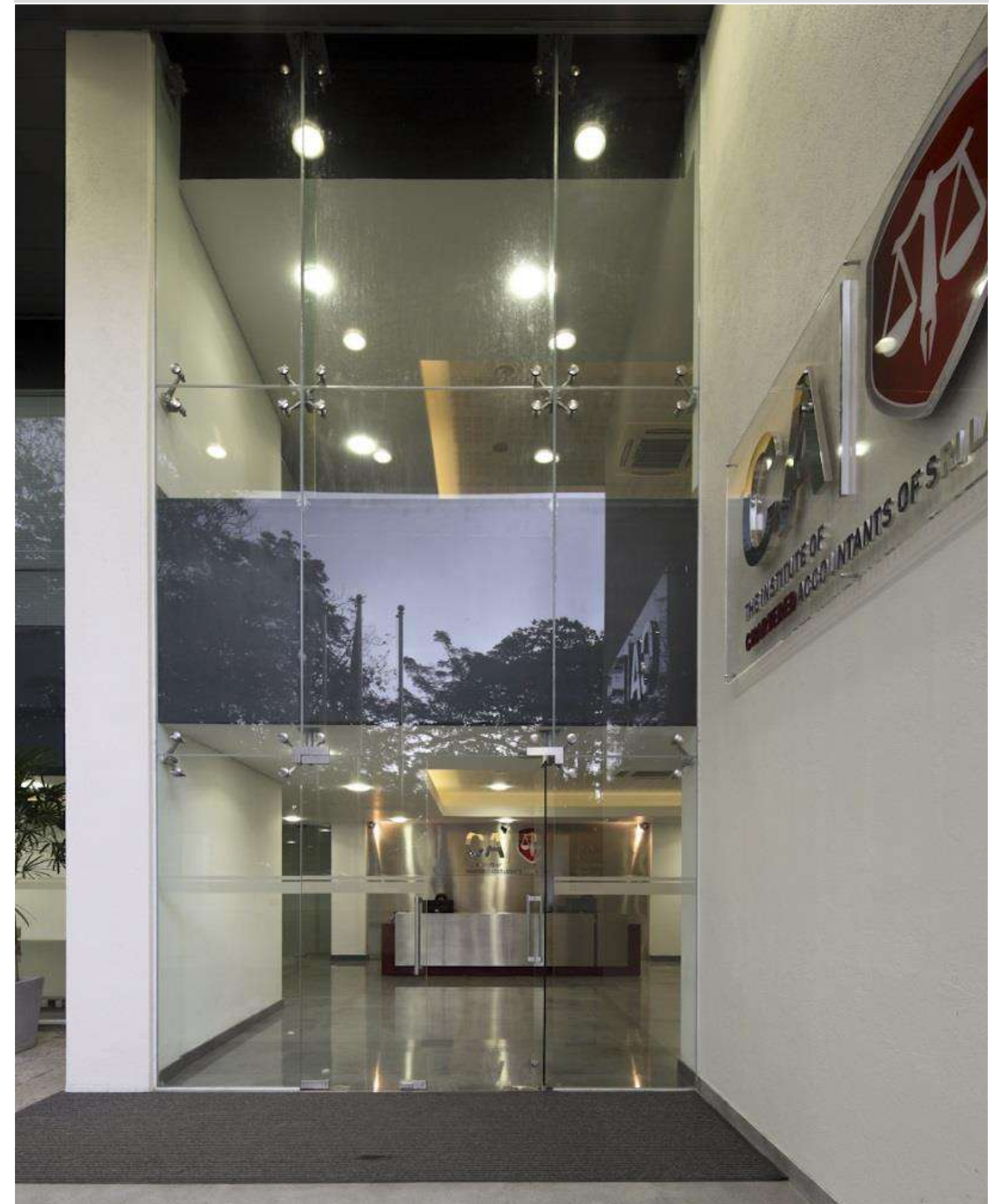
**INSTITUTE OF CHARTERED ACCOUNTANTS OF SRI LANKA @ COLOMBO 07**

The Office Building for the Institute of Chartered Accountants consists of a Ground floor together with Six Upper floors and a Roof Terrace covering a total area of 4100 sqm.

Project Value : Rs. 400 Million  
Year of Completion: 2013







INSTITUTE OF CHARTERED ACCOUNTANTS – NEW WING  
AT COLOMBO 07





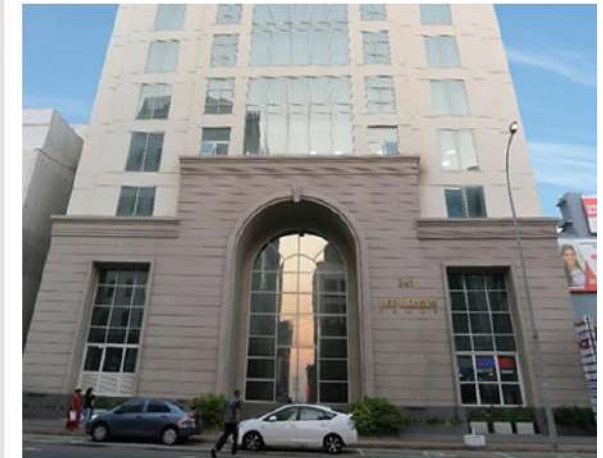
LEE HEDGES TOWER FOR LEE HEDGES PLC



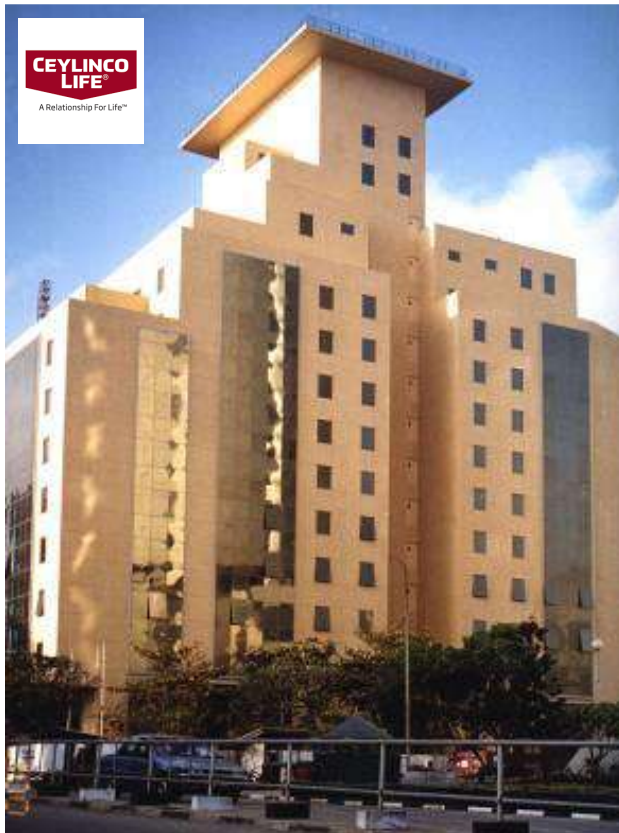
### Multi-storeyed Mixed Development for Lee Hedges Investments Ltd, Colombo 3.

The Office Building for Lee Hedges Investments Limited, of total floor area 8,958 sq.m, houses Offices, Shops & an Apartment complex and consists of 02 Basements, Ground floor & 13 Upper floors.

Project Value : Rs. 1.3 Billion  
Year of Completion: 2018







CEYLINCO HOUSE



CHARTERED INSTITUTE OF MANAGEMENT ACCOUNTANTS AT COLOMBO



FACE-LIFT & MODERNIZATION FOR WORLD TRADE CENTRE



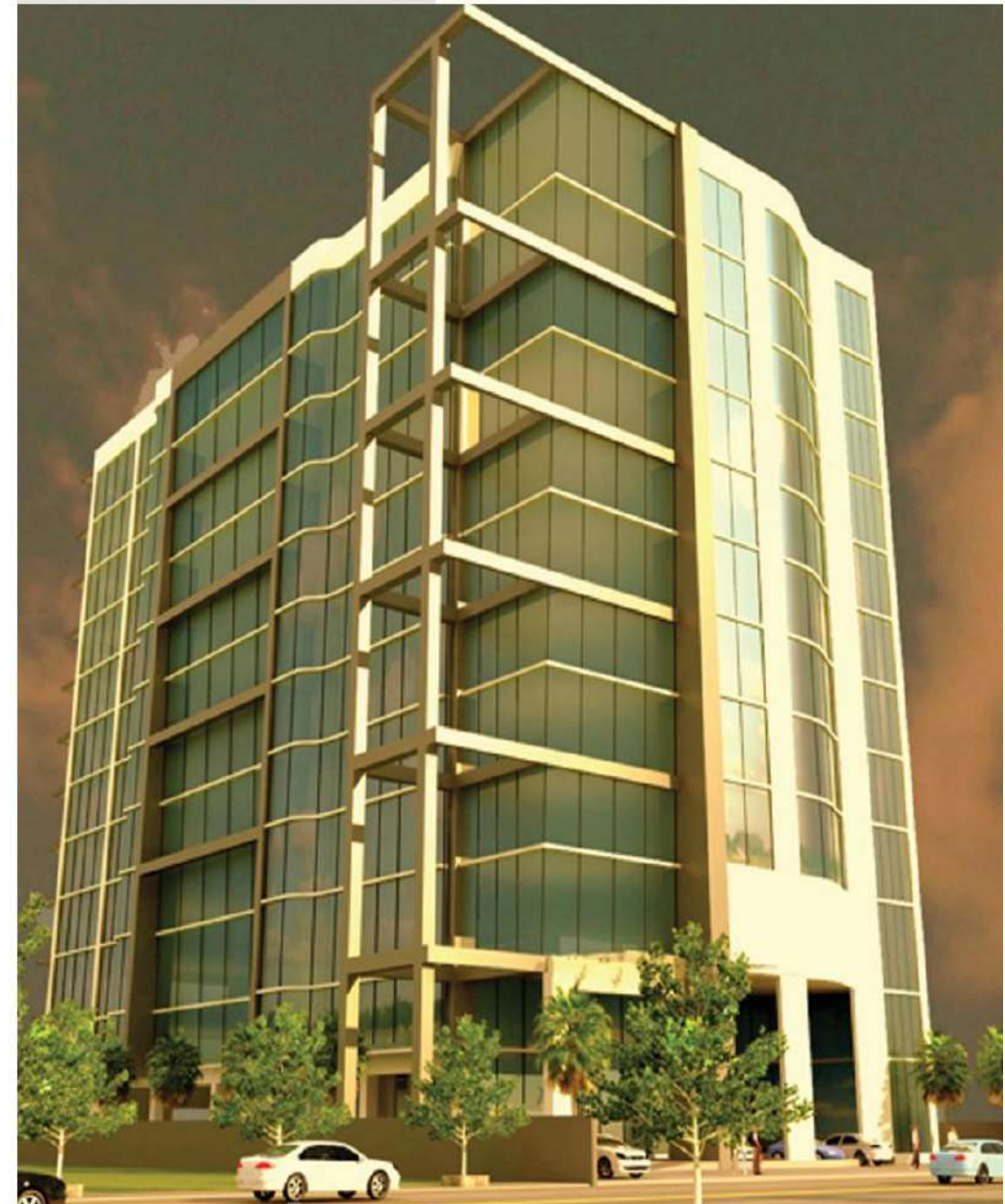
**BUILDING FOR MULTI VISION  
INTERNATIONAL PLC  
@ KALALGODA**



**MULTI-STOREYED OFFICE BUILDING  
FOR MAKOLA YATHAMA HOLDINGS  
(PVT) LTD  
@ COLOMBO 02**

The Building consists of 03 Basement parking levels, Ground floor & 11 Upper floors over an area of approx 21,240 Sqm.

Project Value :Rs. 1.2 Billion  
State of Project : Ongoing

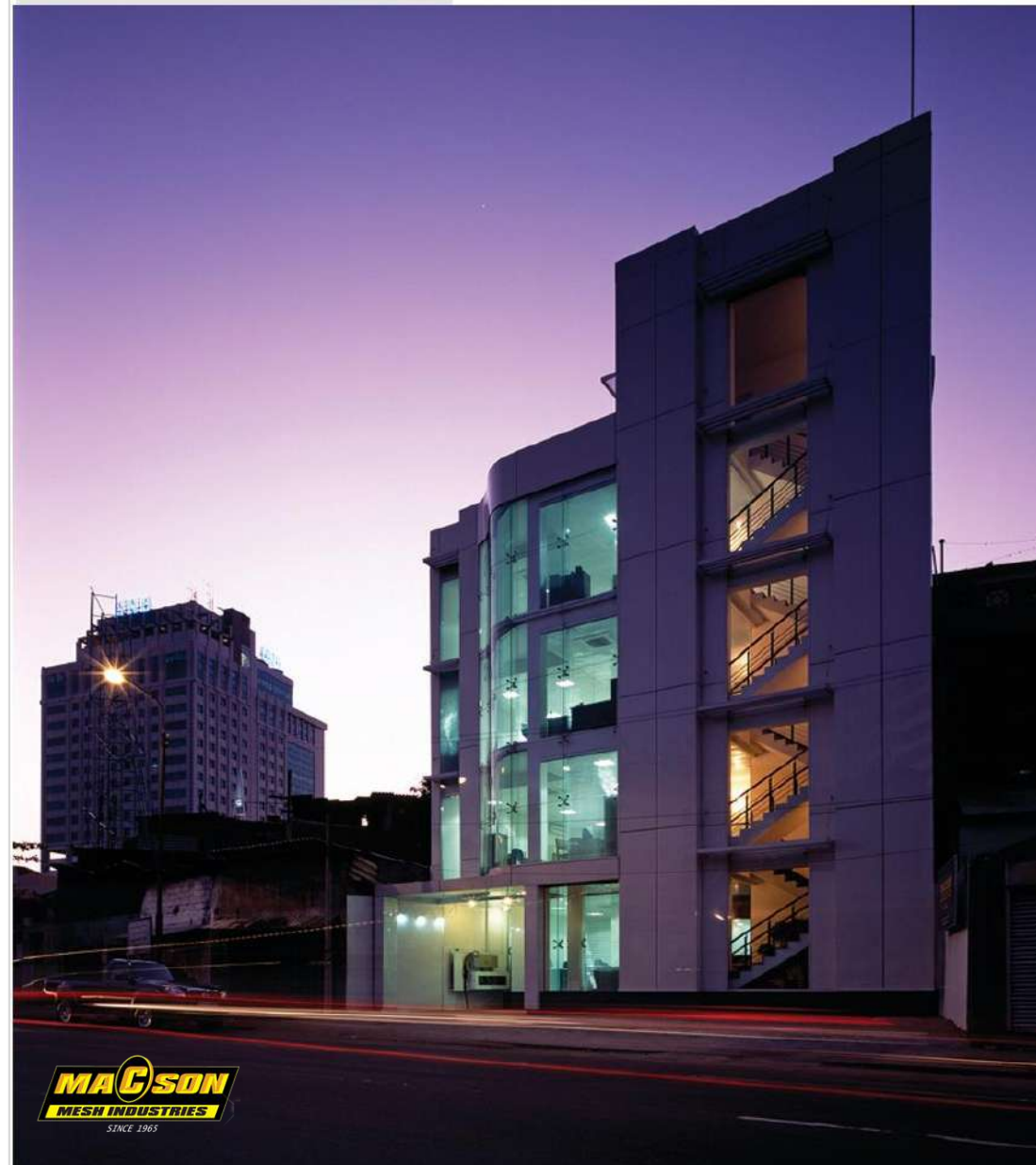




**CORPORATE BUILDING FOR  
MACSON MESH INDUSTRIES  
(PVT) LTD  
@ COLOMBO 10**

The Building consists of a Ground level & 03  
Upper levels with a total area of approx 379  
Sq.m.

Project Value :Rs. 47 Million  
Year of Completion : 2010



**TURRET TOWERS  
@ COLOMBO 03**

The state-of-the-art office building consists of  
a Semi-basement level, Ground level,  
Mezzanine level, 02 above ground parking  
levels together with 05 typical levels of Office  
area over a total area of approx 2670 Sq.m.

Project Value :Rs 410 Million  
State of Project : Ongoing







OFFICE BUILDING FOR PERSHIP GROUP  
AT BAUDDALOKA MW



QUEENSWAY BUILDING  
AT COLOMBO 03





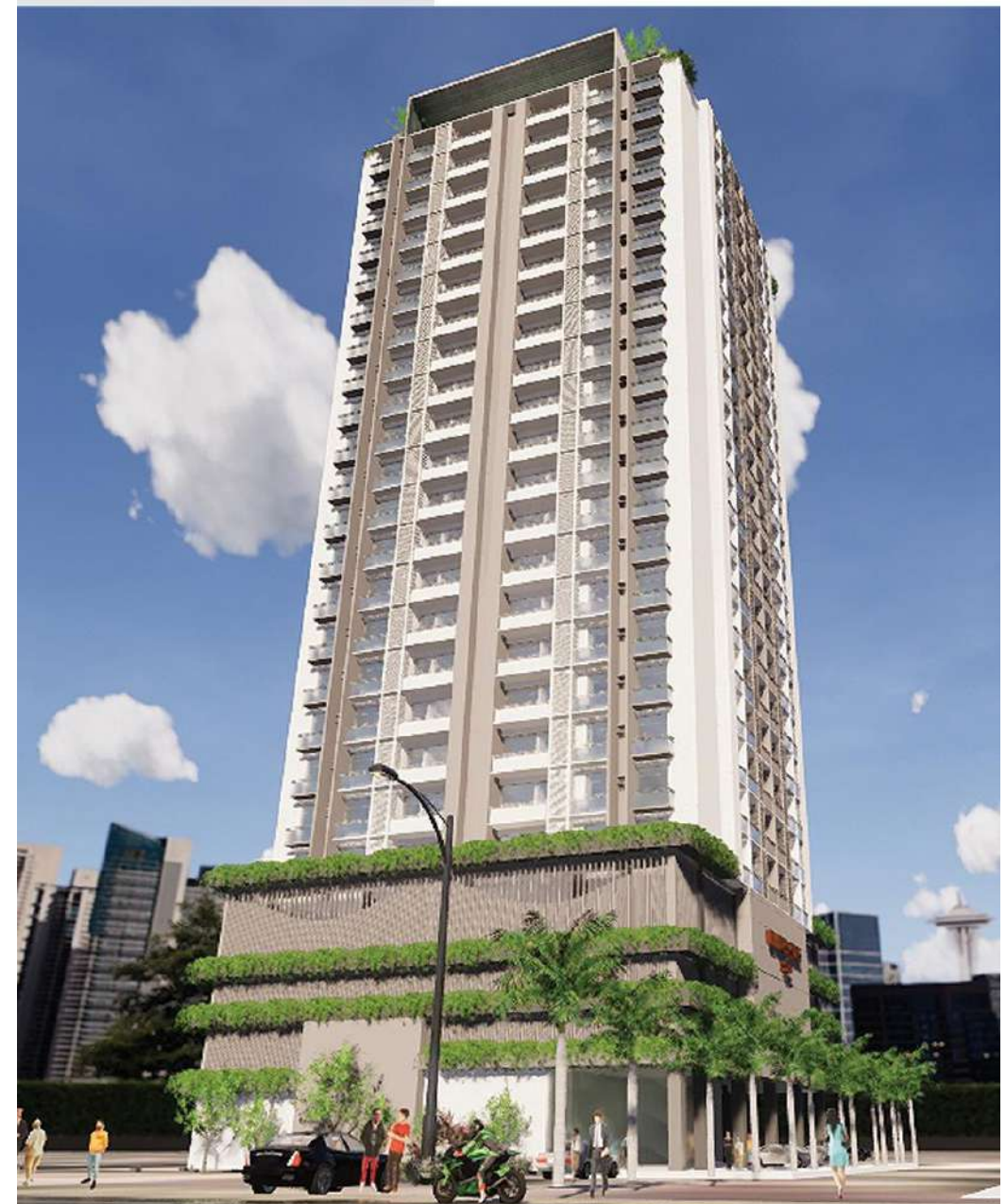
LEE HEDGES DEVELOPMENT



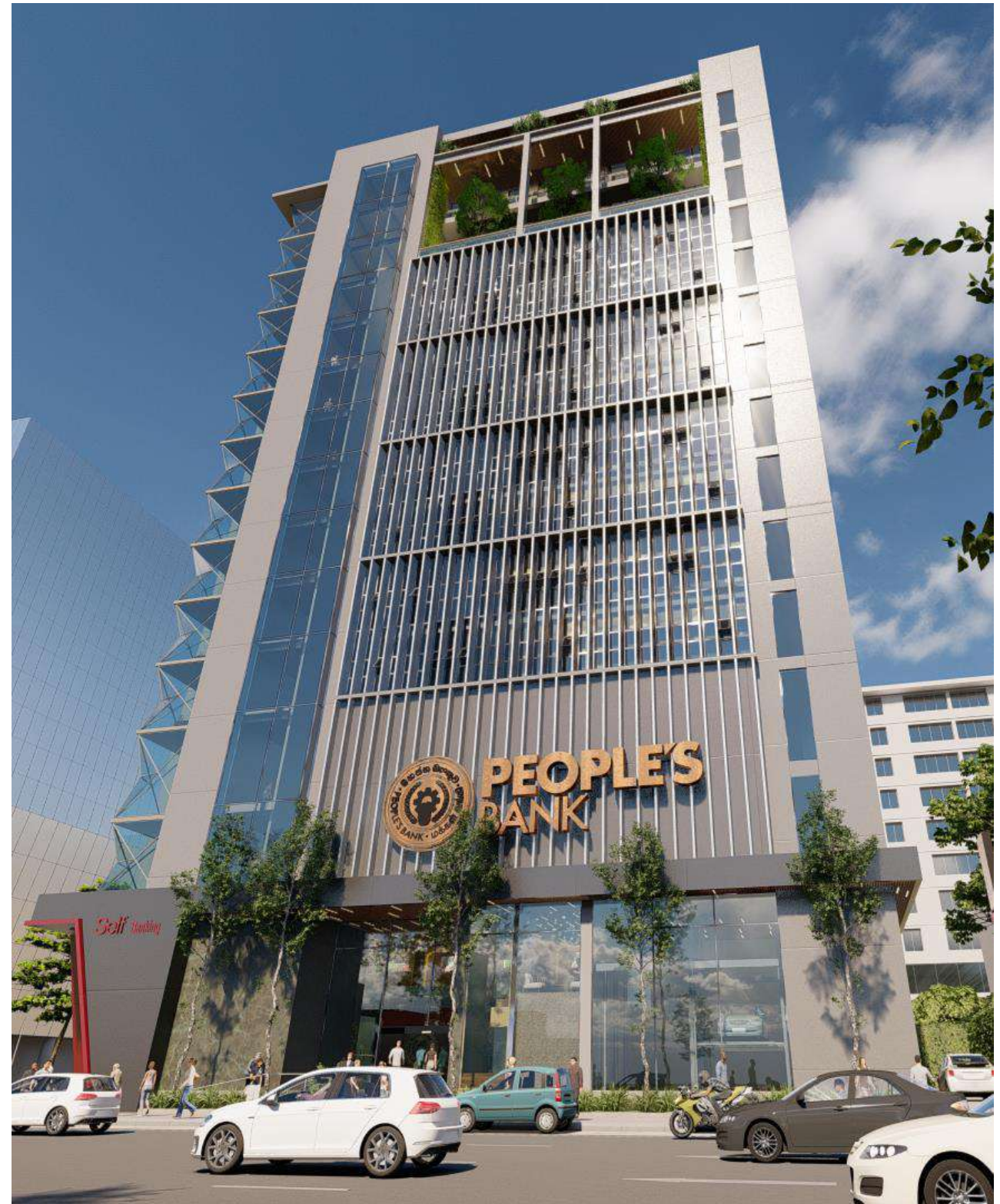
### Proposed Multi-storeyed Mixed Development for Lee Hedges Investments Ltd, Colombo 3.

The Proposed Office Building Lee Hedges Investment Limited, of total area 340 sq.m consists of 03 Basements, Ground level, 05 above ground parking levels, a Mezzanine Floor & 20 office levels.

Project Value : Rs. 4.5 Billion  
State of Project : Ongoing







OFFICE FOR PEOPLES BANK  
AT COLOMBO 03







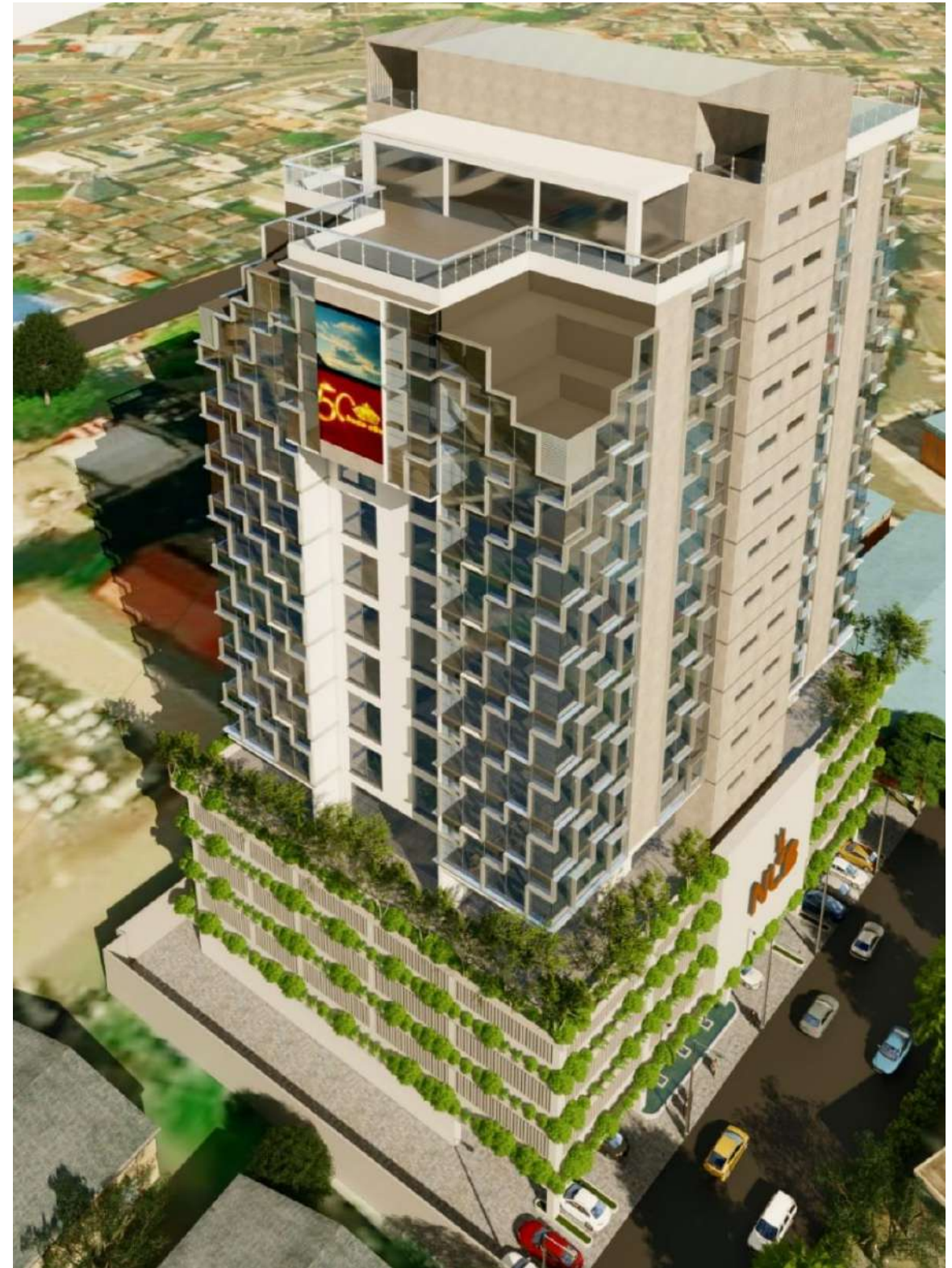
OFFICE FOR SASAKAWA TRUST  
AT COLOMBO 07







**PROPOSED OFFICE BUILDING FOR NATIONAL  
LOTTERIES BOARD  
AT VAUXHALL STREET**







DESIGN PROPOSAL - PROPOSED RAILWAY OPERATION HEADQUARTERS AND TRAIN CONTROL CENTER



RENOVATION TO AN EXISTING BUILDING FOR ORION DEVELOPMENT AT COLOMBO 09





GEN. JOHN KOTHALAWALA DEFENCE ACADEMY RATMALANA



HOTEL SCHOOL OF TOURISM AT COL. 03



NORTH COLOMBO MEDICAL HOSPITAL - RAGAMA

(DESIGN AWARD IN COMPETITION)



SRI LANKA MEDICAL COUNCIL COL. 10



PRILIMINARY CONCEPT PLAN - OPTION 02



**KEY DECISIONS TAKEN TO DEVELOP THE PLAN**

Concept is to provide a unique journey within the site. A person entering through the public court will be taken through a meandering access way, which will come through the two hillocks opening in to the main space with faculty buildings. A green ally is created in between the faculty buildings as a pedestrian path, not disrupted by the roadway, towards the open playground.



ARTIST'S IMPRESSION





WYCHERLEY INTERNATIONAL SCHOOL PHASE 1 & PHASE 2





CONFERENCE HALL FOR INTERNATIONAL CONFERENCE SERVICES INSTITUTE AT KATUNAYAKE







CONFERENCE HALL FOR INTERNATIONAL CONFERENCE SERVICES INSTITUTE AT KATUNAYAKE







REFURBISHMENT & RENOVATION INTERNATIONAL BRANCH FOR HSBC AT COLOMBO 01





PEOPLES BANK KEGALLE



PEOPLES BANK GALLE



PEOPLES BANK KADAWATHA



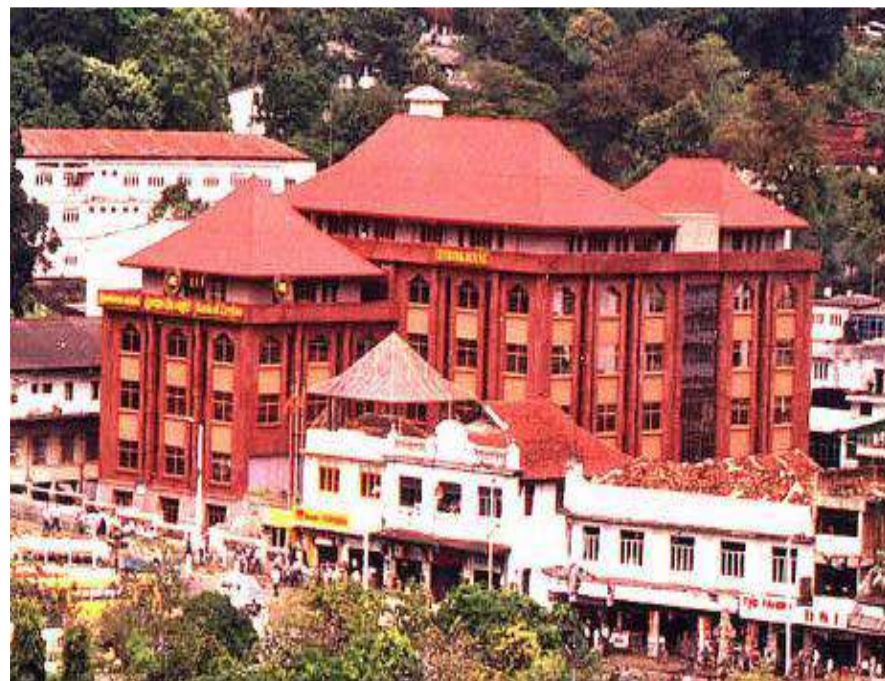
PEOPLES BANK MANKULAM







HNB BANK AT COLOMBO 06 & COLOMBO 01

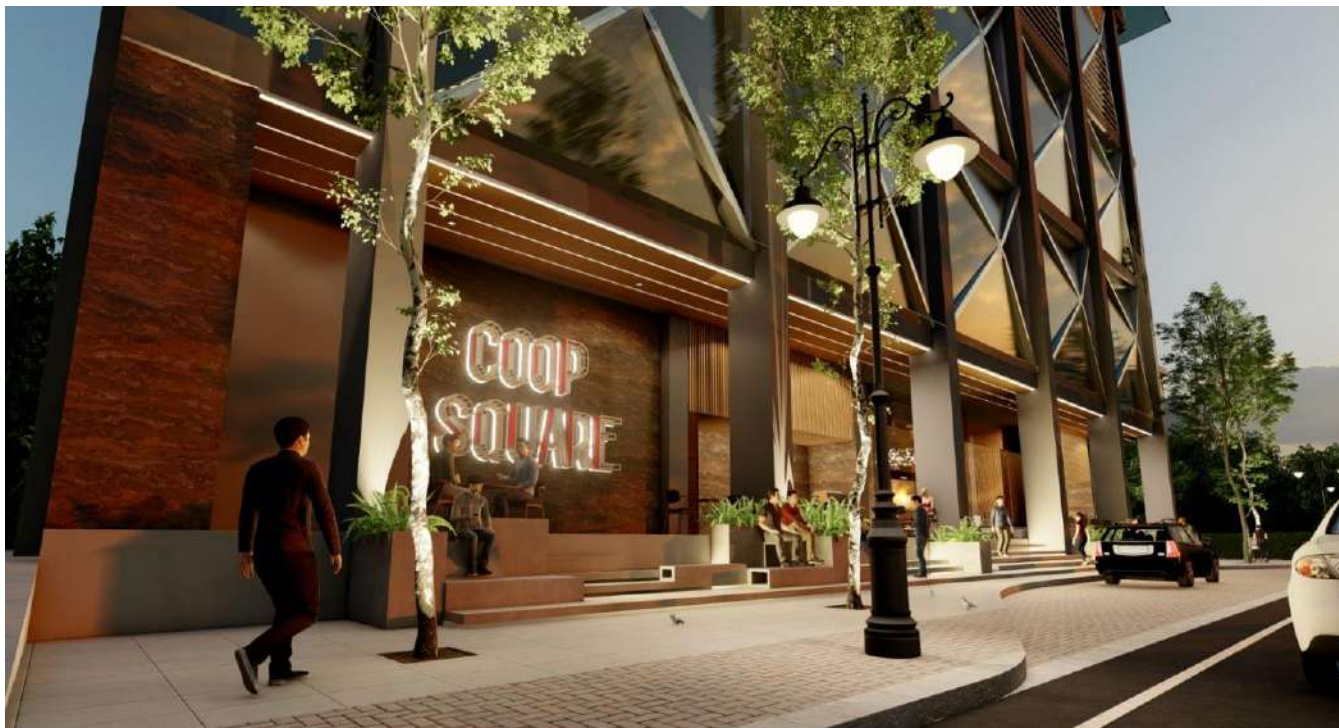


BANK OF CEYLON BRANCH AT KANDY



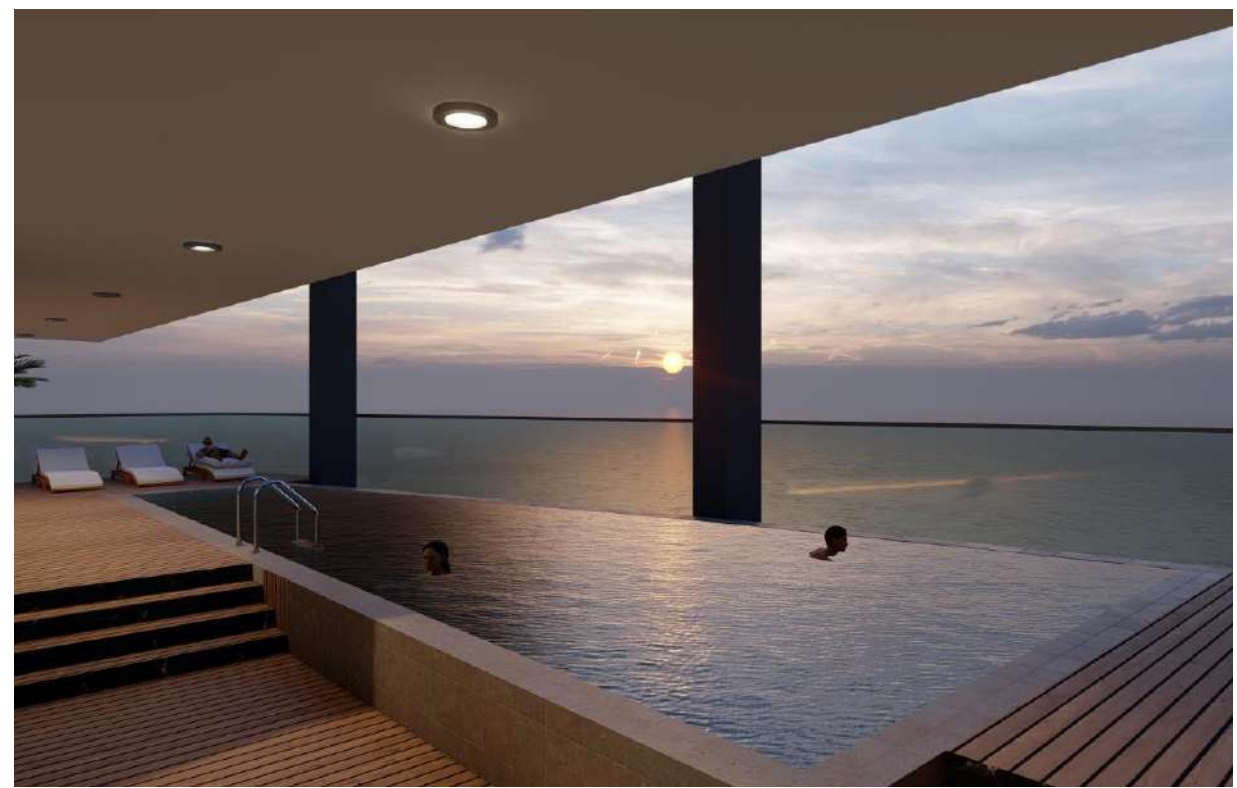
BANK OF CEYLON  
**BOC**  
Bankers to the Nation





DESIGN PROPOSAL – MIXED DEVELOPMENT FOR CONSUMER AFFAIRS AUTHORITY (COOP SQUARE)





DESIGN PROPOSAL – MIXED DEVELOPMENT FOR CONSUMER AFFAIRS AUTHORITY (COOP SQUARE)





DESIGN PROPOSAL - MIXED DEVELOPMENT FOR LOLC HOLDINGS PLC AT RAJAGIRIYA







BERUWALA MIXED DEVELOPMENT PROJECT





FACTORY BUILDING COMPLEX FOR AITKEN SPENCE PRINTING AND PACKAGING ( PVT ) LTD AT MAWARAMANDIYA RECEIVED LEEDS CERTIFICATION ( GOLD )





**FACTORY BUILDING COMPLEX FOR AITKEN SPENCE PRINTING AND PACKAGING ( PVT ) LTD  
AT MAWARAMANDIYA RECEIVED LEEDS CERTIFICATION ( GOLD )**





**ROCELL BATHWARE FACTORY COMPLEX AT GODAGAMA**







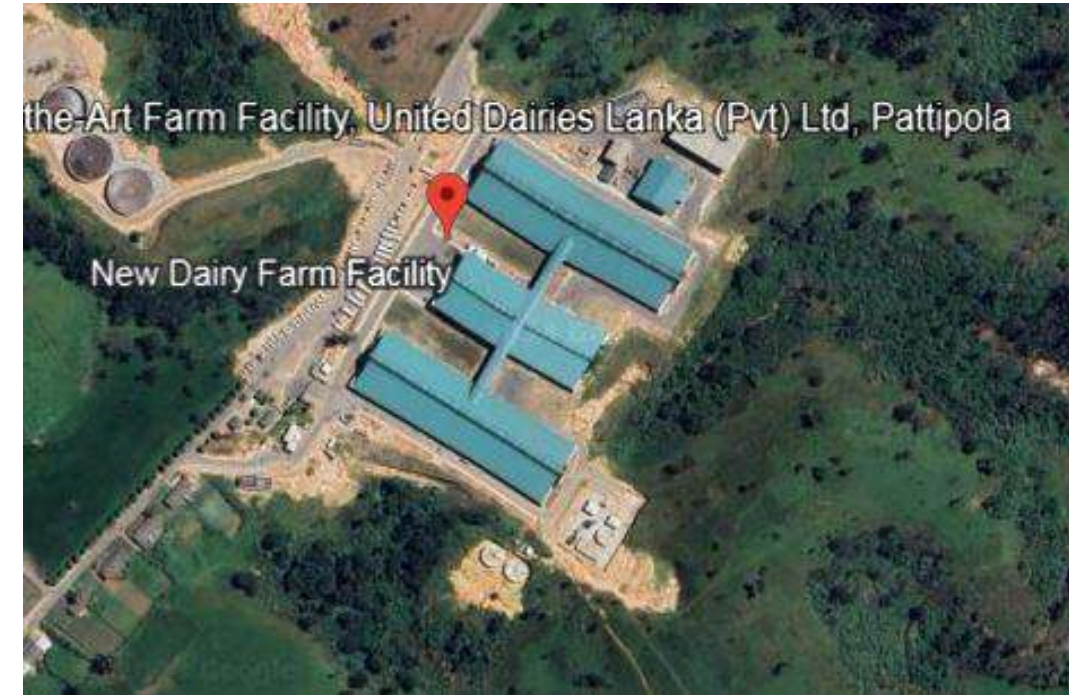
FORMULA WORLD AUTOMOTIVE REPAIR CENTRE







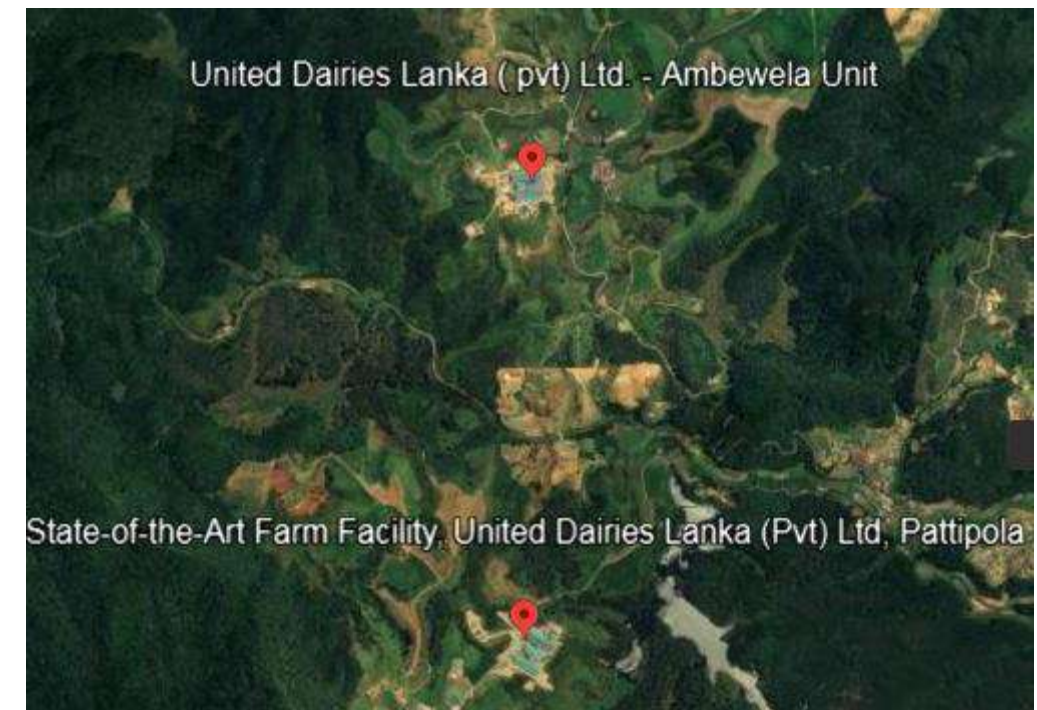
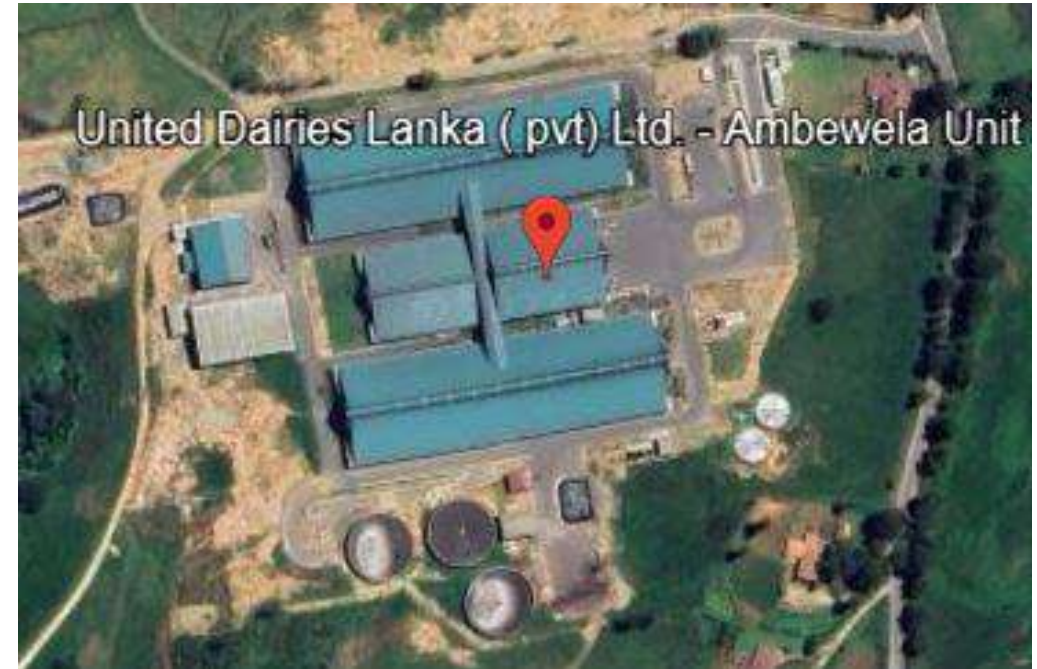




DIARY FARMS FOR UNITED DIARIES LANKA (PVT) LTD AT PATTIPOLA







DIARY FARMS FOR UNITED DIARIES LANKA (PVT) LTD AT AMBEWELA

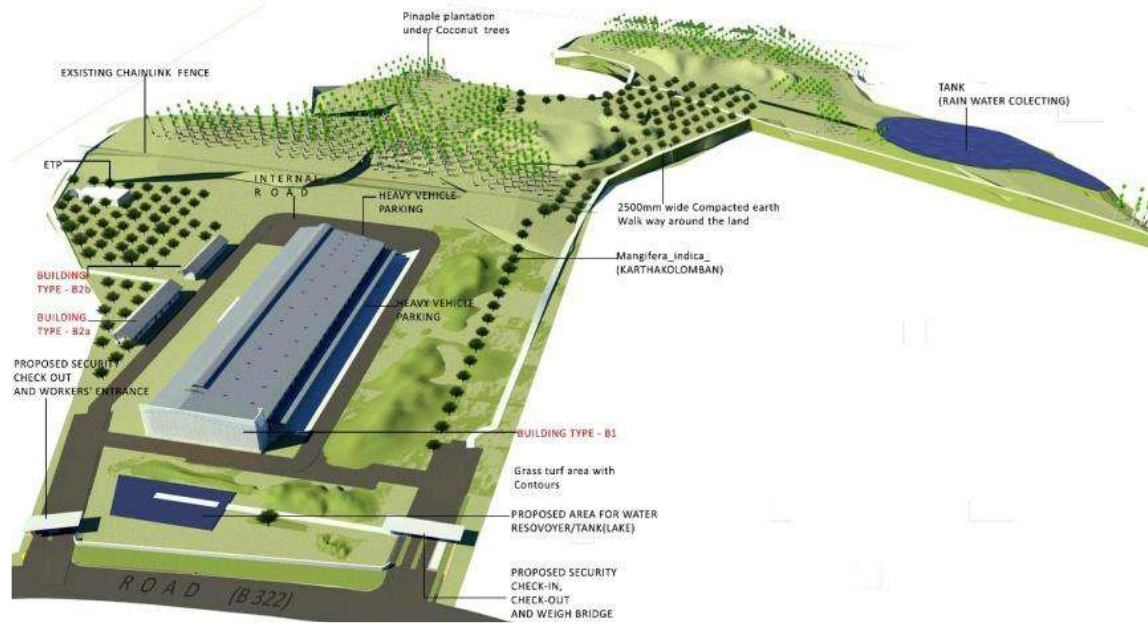






**WAREHOUSE & PRODUCTION FACILITY FOR SHIELD RESTRAINT SYSTEMS (PVT) LTD.  
AT EXPORT PROCESSING ZONE, WATHUPITIWALA**





PROPOSED FACTORY COMPLEX FOR DABUR LANKA (PVT) LTD AT YAKADEGALA ESTATE, MIHIRIGAME







FACTORY COMPLEX FOR UNILEVER SRI LANKA LTD;  
"PROJECT MORPH"







FACTORY FOR SUNQUICK LANKA (PVT) LTD





PROPOSED WAREHOUSE FOR ACE CONTAINERS (PVT) LTD @ MABOLE



WAREHOUSE AT SEEDUWA FOR (DSCL)

*Aitken Spence* Logistics  
ACE CONTAINER (PVT) LTD







**PROPOSED COLD STORAGE FACILITY AND DRY STORES FOR BARARI LANKA (PVT) LTD AT WELISARA**

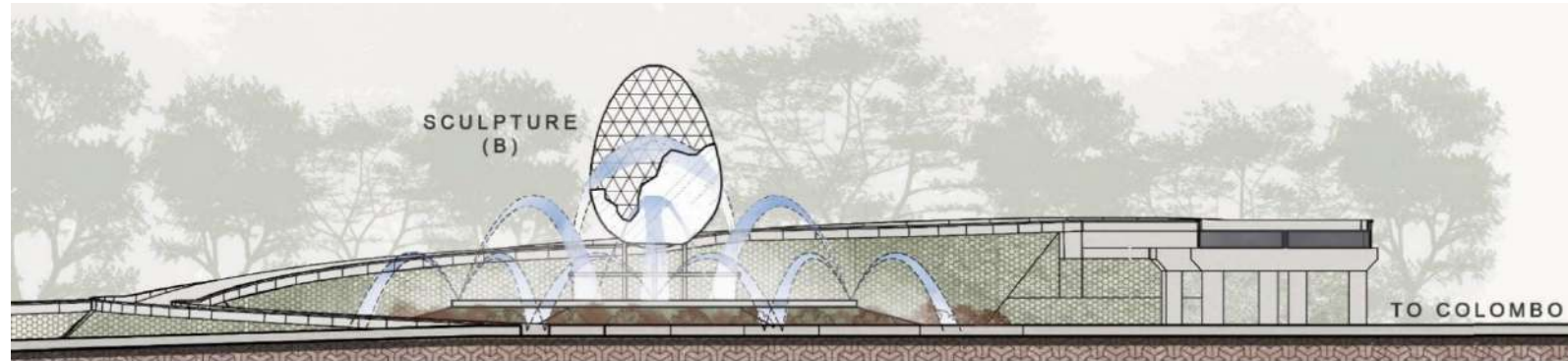




PROPOSED SCREEN PRINTING FACTORY  
FOR BENTLAGE LANKA (ON GOING)



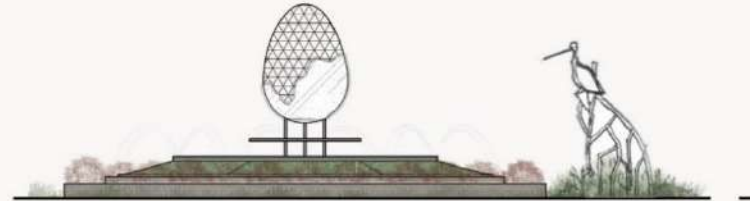




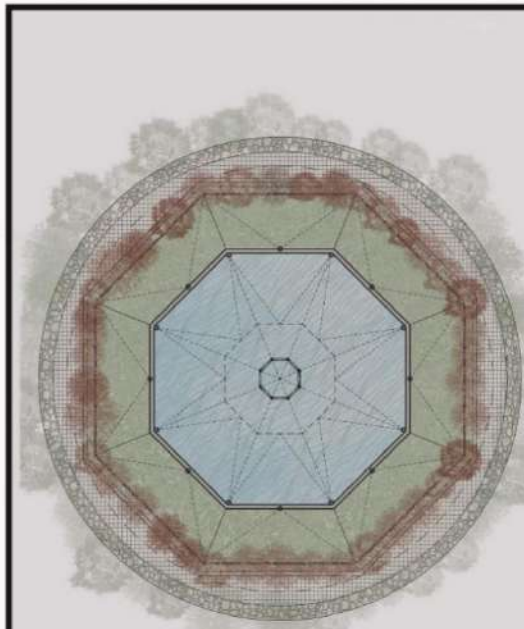
SECTIONAL ELEVATION SCALE 1:200



FRONT ELEVATION SCALE 1:800



CONCEPTUAL ELEVATION SCALE 1:800



DETAILED LAYOUT SCALE 1:800

**DESIGN APPROACH**

TO REPRESENT THE WETLAND AREA, WATER FOUNTAIN IS PROPOSED AND ON THE FOUNTAIN, AN OVAL FORM SCULPTURE IS DESIGNED TO INDICATE THE BIO-DIVERSITY OF THE CONTEXT.

THE SCULPTURE (B) WHICH REPRESENT A BIRD LIKE EGRET/ PERPULE HERON ON MANGROOVE ROOTS IS DIRECTED TO WATER FOUNTAIN SIDE.



**DESIGN PROPOSAL – LANDSCAPE & JOGGING TRACK AT KERAWALAPITIYA INTERCHANGE**





WATER FOUNTAIN

SECTIONAL ELEVATION SCALE 1:200



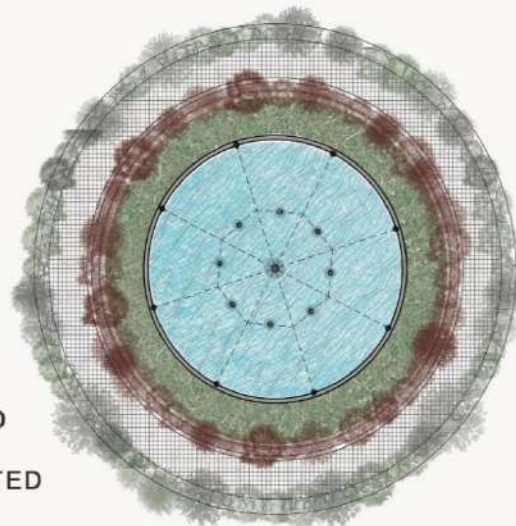
IN THIS ZONE B,

RAMP (B) & (C) ARE USED TO CONNECT FOR CKE AND FROM KADAWATHA & KERAWALAPITIYA SIDE. THIS ZONE ALSO HAS THE POTENTIAL TO INDICATE THE AUTHENTICITY OF THE MACRO CONTEXT.



FRONT ELEVATION SCALE 1:800

A WATER FOUNTAIN WHICH IS ROUND IS DESIGNED WITH LANDSCAPE ARRANGEMENT. AND DESIGNED TO USE AS ILLUMINATED FOUNTAIN AT NIGHT.



DETAILED LAYOUT SCALE 1:800



DESIGN PROPOSAL – LANDSCAPE & JOGGING TRACK AT KERAWALAPITIYA INTERCHANGE



**THANK YOU**